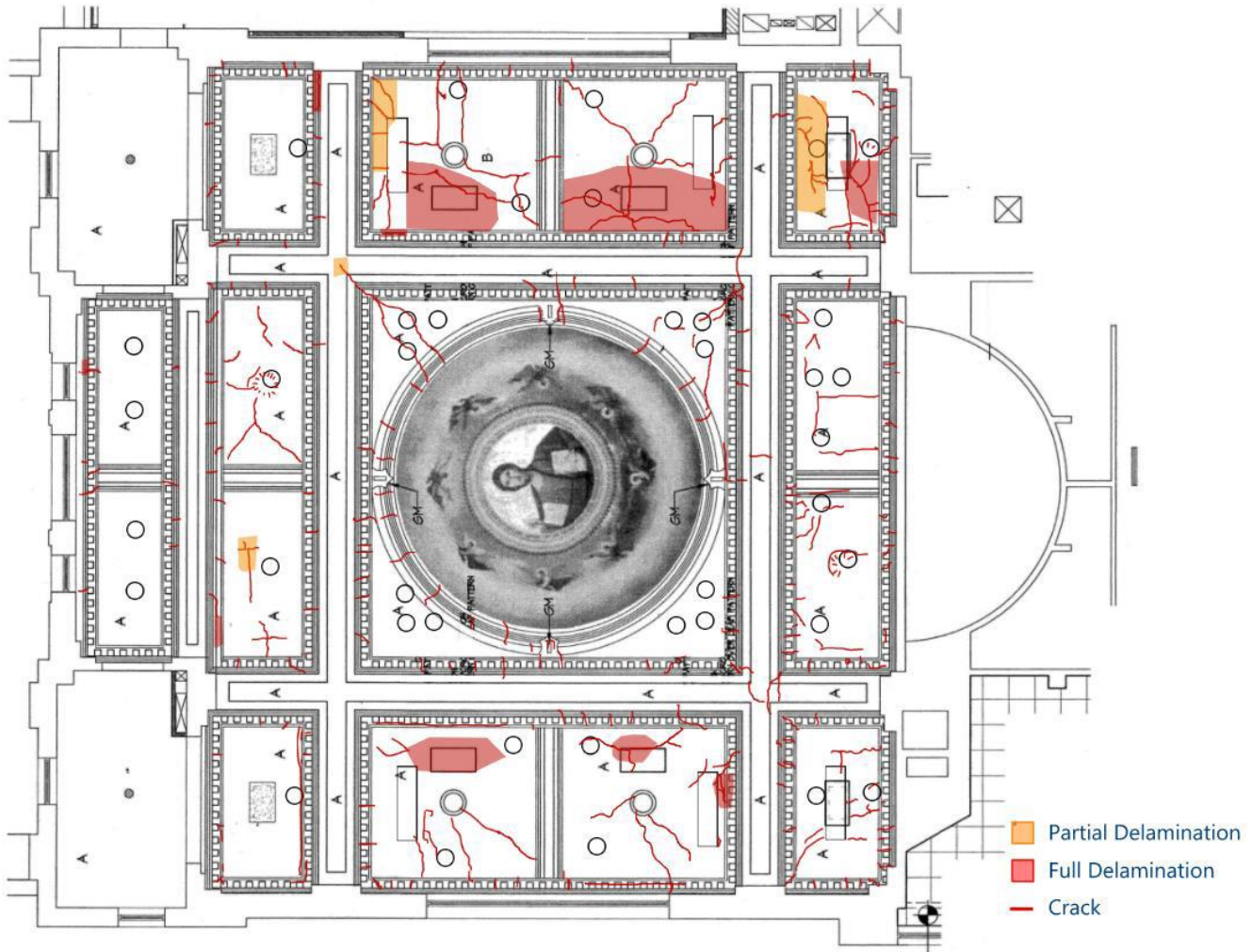


Cathedral Ceiling Repair Update #6, October 21

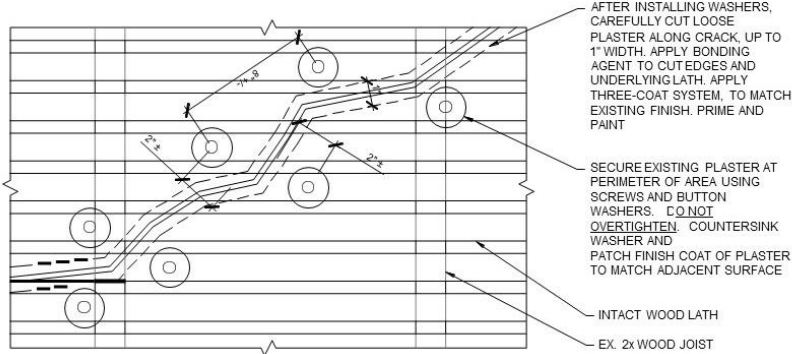
Over the last 2 weeks, the ceiling project has made progress on a couple of fronts, as outlined below

- WJE, the engineering firm, has completed the inspection of the ceiling. They produced a map of the ceiling identifying areas that are debonded and the location all cracks.



- WJE released the full engineering report with their recommendations on what areas to re-plaster, which cracks to repair, and the procedure for repairing the cracks. This reports also reiterates the findings regarding cause and condition from their previous report.
- A web page has been setup for information on the ceiling restoration project. It contains the two engineering reports, including the one above and all of the previous updates. From the homepage, scroll to information and click Ceiling Restoration Project.
- NIKO Contracting tested the repair procedures, primarily the installation process of the plaster washers, and identified several minor issues in the procedures specified by WJE. They had two meetings with WJE over the past week to test and refine the procedures.
- NIKO Contracting also met with the plasterer this past week to prepare for his efforts.

WJE identified 5 areas where the current plaster needs to be taken down and new plastering applied. They also identified a number of serious cracks that need to be addressed. Before any old plaster is knocked down, the surrounding area will be secured with plaster washers. This will stabilize the surrounding area before chipping away the old plaster. Same procedure will be followed when excavating the serious cracks. The sketch below is an example depicting how the reinforcing plaster washer will be installed prior to the repair work of a crack.



1 CRACK REPAIR ON PLASTER WITH WOOD LATH - WIDTH GREATER THAN 1/16"
NO SCALE

Hopefully, by the time of the next report, the evaluations and procedures will be completed and the actual repair work will be underway. If you would like more detail on the repair effort, feel free to ask Vic Bertolina, Jim Machin, or Van Paras during any coffee hour.

Parish Council